

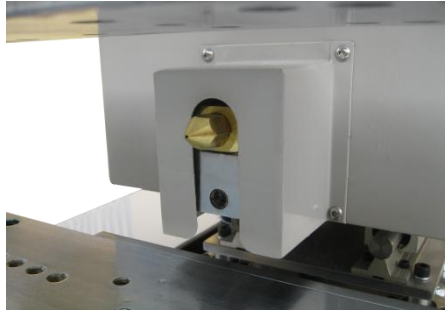
KAPPA 700H**Side Injection Shuttle Table Compact Machine**

LPMS® machines are engineered for low pressure molding, using specialty resins to encapsulate delicate parts, like automotive electronics, PCBA, coil, fiber-optic, LED lighting, cable, etc.

The benefits of side injection is that when one large cavity being encapsulated from the center of the mold, which can prevent the gate mark from the center of product.

Features

- C-Frame design with shuttle table, one upper mold serves two bottom molds.
- Shuttle table reduces production time and is safe for operator.
- Air over oil cylinder gives larger clamp force for bigger part.
- Self-contained 7 liter melt tank.
- Modular injection system for ease of service.
- Two temperature control zone work independently.
- Over temperature alarm, automatic heating, stop heating functions are included.
- Two safety start buttons, safety door to protect operator.
- Equip mold cooling water route, cooling water can be used to put through.
- Ejection system is equipped.
- Optional : Auto-feeding system and dryer machine enhance productivity.
- Optional : Dual dispensing control system.



Side injection



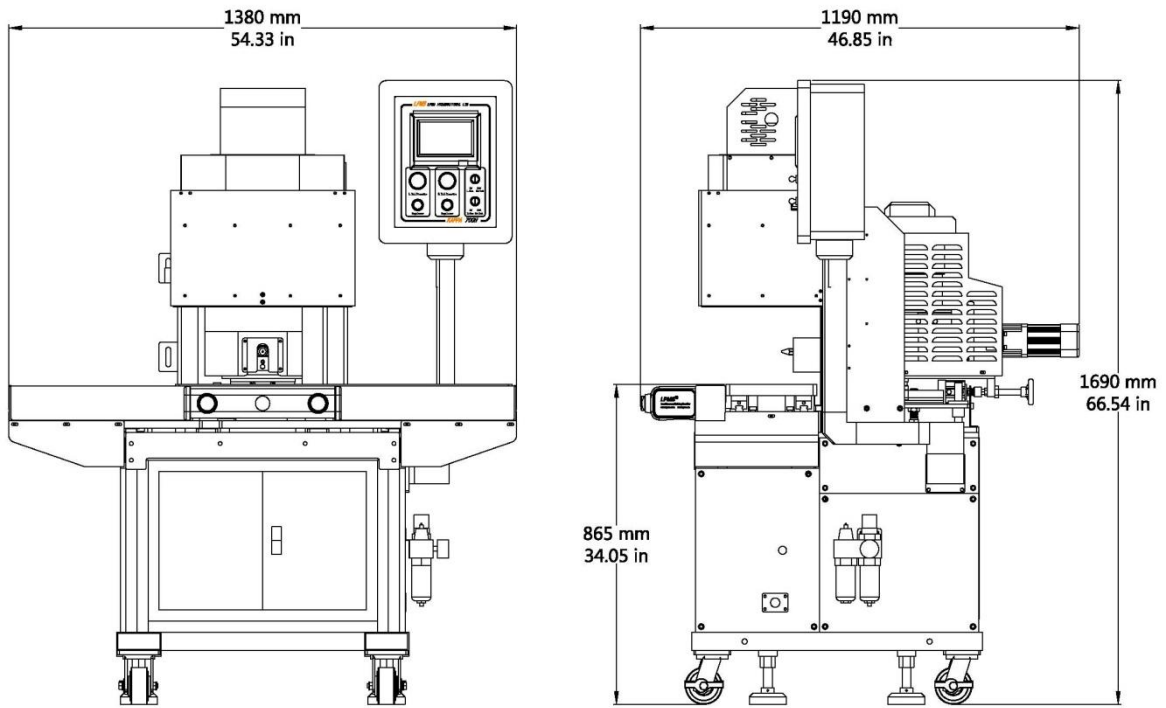
Shuttle table machine

Specification

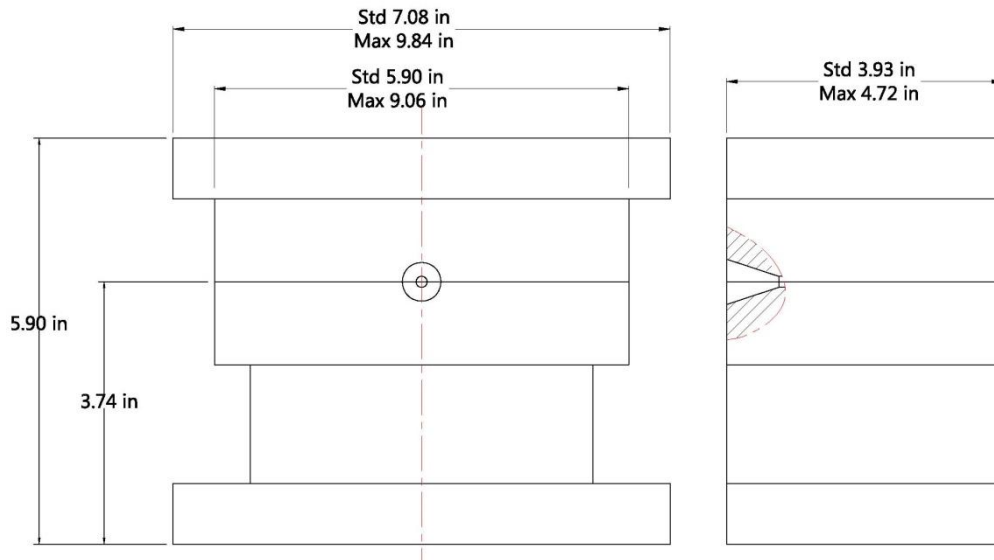
Machine Size / Weight	1380 mm x 1190 mm x 1690 mm / 470 kg 54.33 in x 46.85 in x 66.54 in / 1036 lbs
Footprint	1380 mm x 1190 mm 54.33 in x 46.85 in
Working Station Height	865 mm 34.05 in
Melting Tank	Melt on demand 7 liter x 1
Auto Feeding System	Optional
Gun Model & Tip	LPMS-G02 / 36.4° or 90°
Heated Hose Model& Q' ty	N/A
Electricity ¹	200~240VAC / 1 Phase / 50HZ
Temperature Control Zones	2
Temperature Range	Ambient up to 250°C / 485°F
Max. Power	4.3 Kw
Min. Air Pressure	0.5MPa
Air Consumption	0.1m ³ / min 3.5ft ³ / min
Clamping Device	Air Over Oil Cylinder
Clamping Force	Max.5T (Option 10T)
Clamping Stroke	75 mm 2.85 in
Control System	7 in HMI , PLC controlled
Safety Protection	Two safety start buttons, Safety door
Std. Mold set Size/ Weight	180 mm x 100 mm x 150 mm / 16 kg 7.09 in x 3.94 in x 5.91 in / 35.27 lbs
Max. Mold set Size	250 mm x 230 mm x 150 mm 9.84 in x 9.06 in x 5.91 in

¹ Input power of 200-240 VAC 50/60 Hz single-phase or 380VAC 50/60Hz three phase.

Dimension



Machine dimension



Mold set dimension

※ LPMS reserved the right of final explanation. Please forgive that if any change of products will not specify additionally.